

Mapping Humanity



Fraym provides novel, localized human geography data for the entire world.

Our AI/ML is trained on satellite imagery, large geospatial datasets, and targeted household surveys to produce high-fidelity maps of population demographics, living standards, attitudes, and behaviors. Fraym's data has informed more than \$40 billion in programmatic and operational decisions in both the private and government sectors. Our analysis-ready, broad-area dynamic datasets save analysts thousands of hours in data sourcing, vetting, and preparation, enabling our customers to direct scarce resources on what really matters.

GEOINT Applications for Fraym

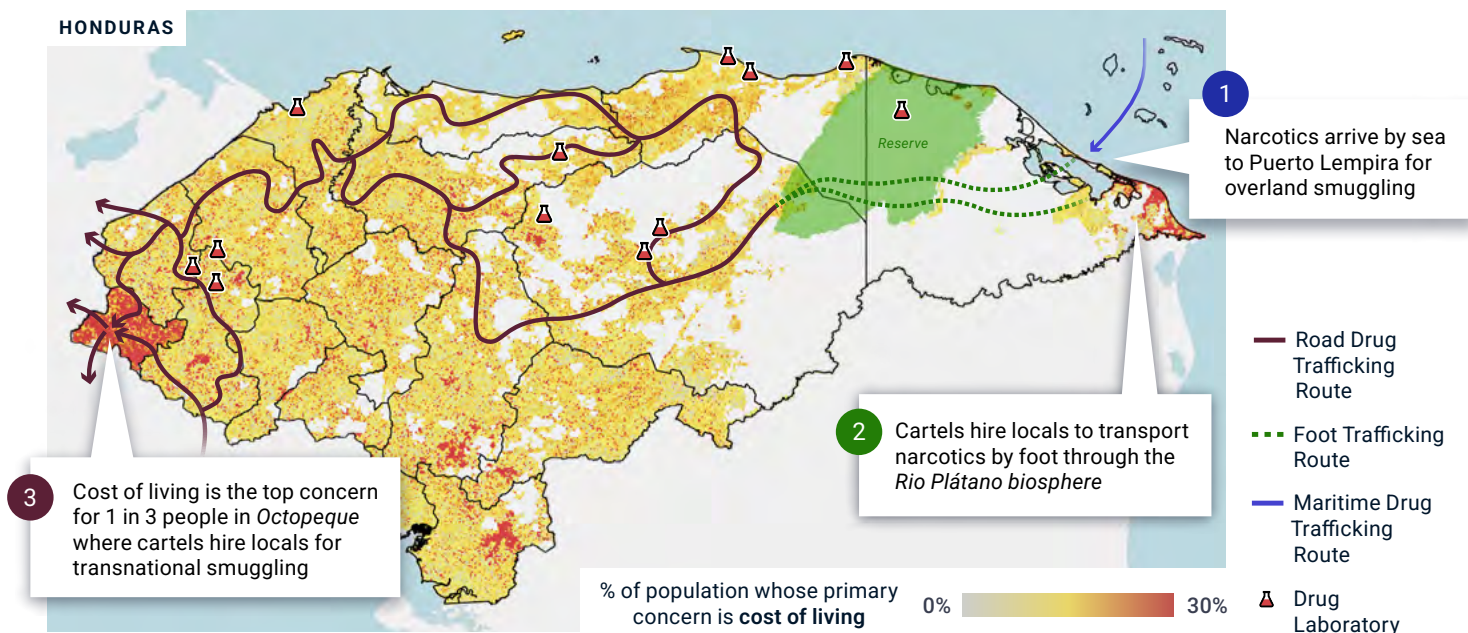
- » Effects of US and Foreign Actions & Policies
- » Indications and Warnings
- » Warfighter Support
- » Assessing Vulnerabilities
- » Tracking Economic Changes
- » Humanitarian Assistance & Disaster Response (HADR)

Cartels Exploit Cost of Living to Hire Locals

Increasingly complex and volatile global population trends have critical implications for US national security. In this example Publicly Available Information (PAI) indicates that Transnational Criminal Organizations (TCOs) exploit weakly governed spaces in Central America to establish narcotics smuggling routes. Leveraging this level of human geography illuminates "where" and "why" cartels are able to operate

effectively. Incorporating this type of human population data, updated at regular intervals, can enable NSG partners to support both strategic analysis (in the form of policy impacts) and tactical operations (providing focused locations).

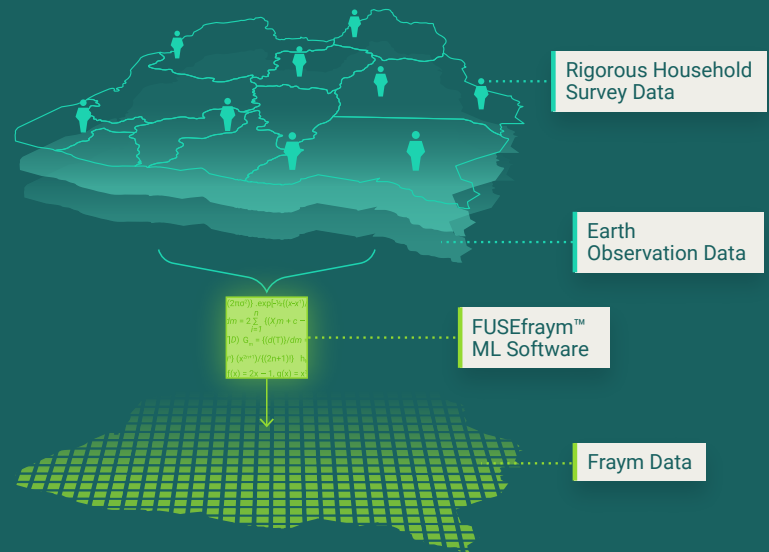
The graphic below shows the generalized drug trafficking routes and points of interest from open source reporting, overlaid on Fraym's hyperlocal (1km² grid) community level population data to provide a more complete picture.



Transforming ordinary household surveys into census-like spatial data.

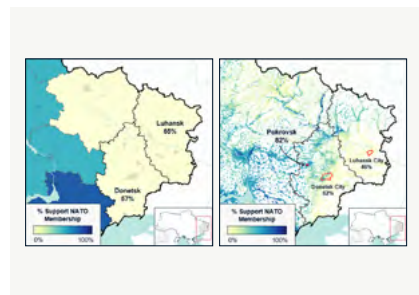
FRAYM'S UNIQUE VALUE

- » Neighborhood level resolution
- » Global scale
- » Trend monitoring
- » Flexible integrations

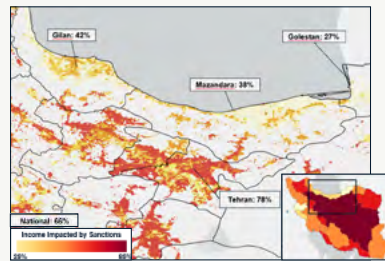


Fraym data includes hundreds of population characteristics for nearly any country in the world at 1km² resolution.

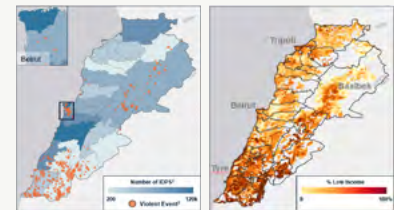
Assess Influence



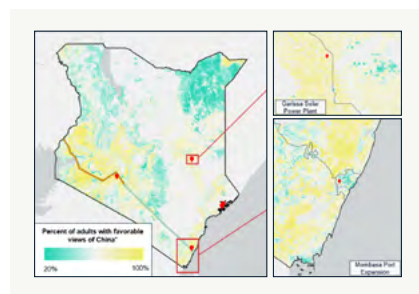
Monitor Economic Trends



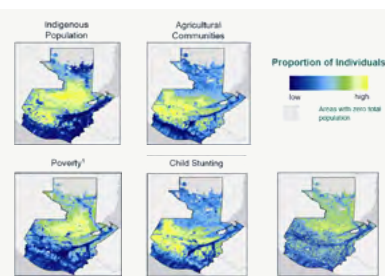
Analyze Demographics



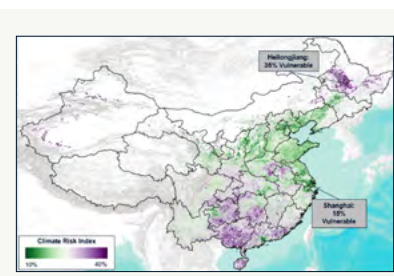
Monitor Facilities



Track Migration



Disaster Preparedness



CUSTOMERS



Contact Chris Kannan at c.kannan@fraym.io to discuss further