

Zoom into communities across the globe and know the people's attributes, attitudes, and behaviors.

Key Applications for Energy

Energy Access

Custom energy profiles on current state of energy access, consumption, ability-to-pay with semi-annual updates for optimal scenarios to address dynamic demand.

Energy Transition

Inform opportunities and roadmaps for expansion of services towards clean energy e.g. Least Cost Electrification, clean cooking, e-mobility, diesel genset replacement, cooling etc.

Energy for Growth

Identify potential need for productive use at the household and MSME levels e.g. cold chain opportunities in agriculture, job creation, youth and women empowerment etc.

Gender Inclusive Energy Access

Identify gaps in women's access and participation in the energy sector from hundreds of hyperlocal sex-disaggregated indicators from research on patterns in gender and energy consumption, perception and preferences to reduce the gender access gap.

Analytical Example

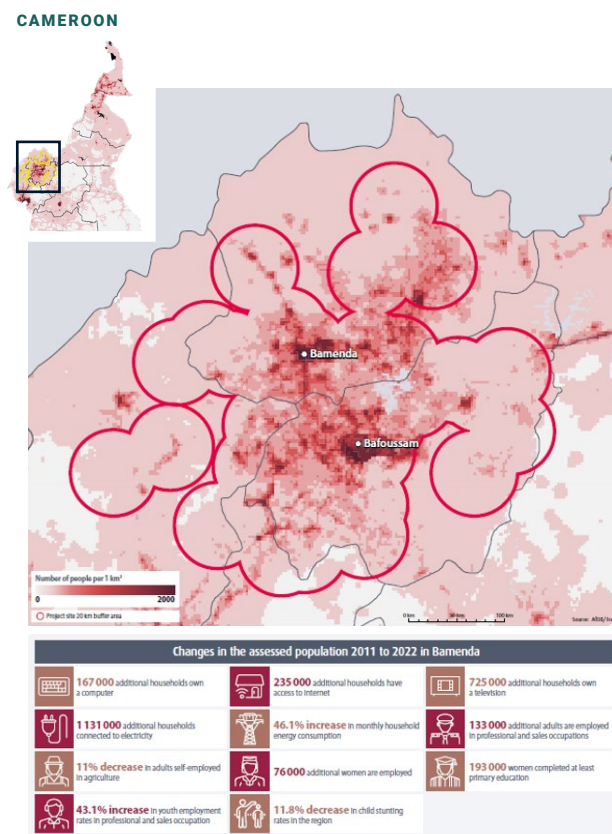
The Case of Energy Access and Living Conditions

The African Development Bank (AfDB) engaged Fraym to measure the impact of its project to strengthen and extend Cameroon's electricity transmission and distribution networks, which was launched in September 2010 and completed in December 2022.

At completion, Fraym found that the project increased the rural electrification rate within the project areas from 3.5% to 24% and improvement in other living conditions including:

- » 1M additional households have piped in drinking water
- » 2.7M additional households have access to the internet
- » 2.9M additional households use advanced cooking fuel

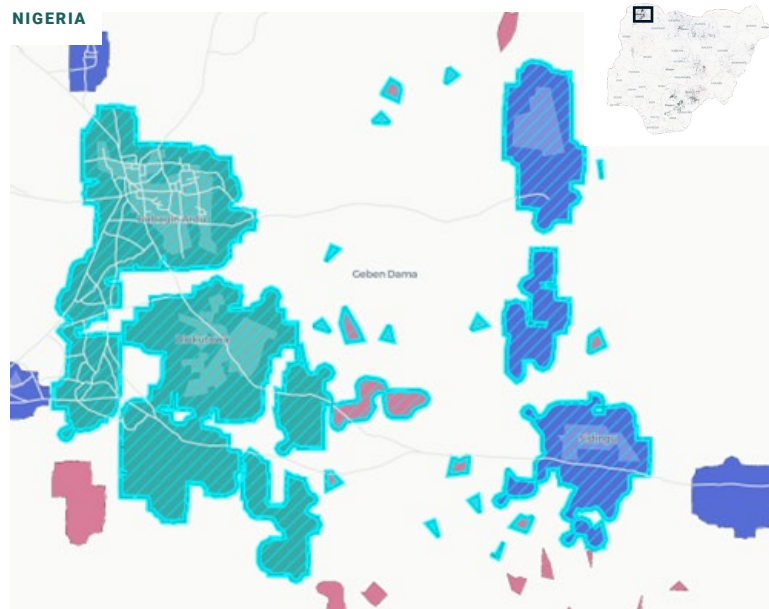
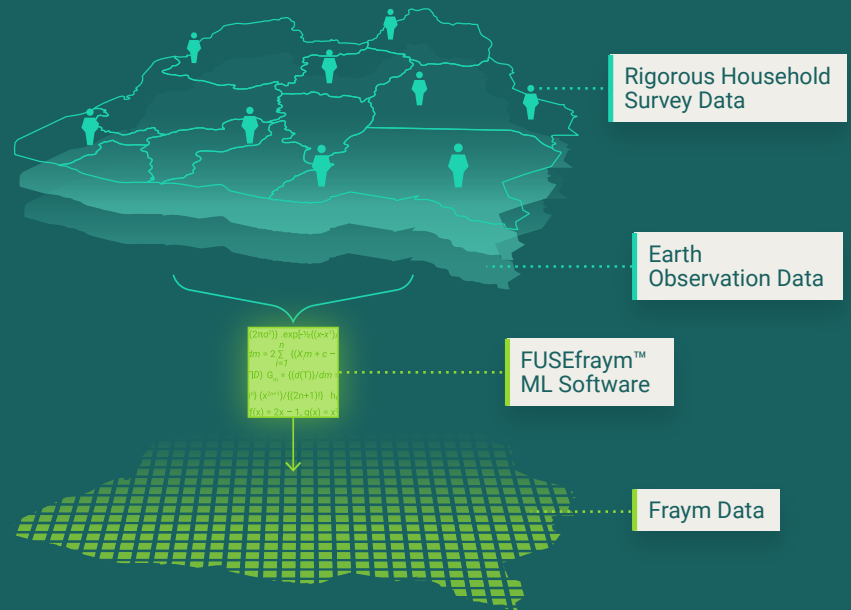
The assessment found that the Cameroon electrification project had a significant positive impact on the community, with improved education, health care, economic development, and reduced poverty.



Transforming ordinary household surveys into census-like spatial data.

FRAYM'S UNIQUE VALUE

- » Neighborhood level resolution
- » Standardized global data
- » Trend monitoring
- » Flexible integrations



2030 Least Cost Technology

Grid MG SHS

Fraym Partners with SEforAll to Support Energy Access in Nigeria

Fraym worked with SEforALL under its Universal Integrated Energy Planning programme, to support the Government of Nigeria in developing a best-in-class IEP Tool (nigeria-iep.sdg7energyplanning.org) with enriched data for Nigeria to deliver actionable market intelligence for the Nigerian government and energy sector stakeholders.

The platform is part of Fraym's intuitive delivery access options to make information accessible to Nigerian policy makers and practitioners for more informed decisions about their strategies and operations to advance energy access in the country. Fraym's data is accessible via formats identified as appropriate for users and can also be integrated into other platforms for seamless workflows.

CURRENT CUSTOMERS

Shell Foundation |



USAID FROM THE AMERICAN PEOPLE

THE WORLD BANK

USTDA U.S. TRADE AND DEVELOPMENT AGENCY



Contact Jackie Mwaniki at j.mwaniki@fraym.io to discuss further