

Zoom into communities across the globe and know the people's attributes, attitudes, and behaviors.

## Key Applications for Democracy & Governance

### Access to Critical Services

Map access to public services at the local level and identify under-served or vulnerable communities for prioritization.

### Trust in Government

Map trust in government and attitudes toward public services, institutions, and key public issues over time.

### Norms Analysis

Quantify baseline and change in norms surrounding corruption, human rights, and inclusion to support advocacy for pro-democracy measures.

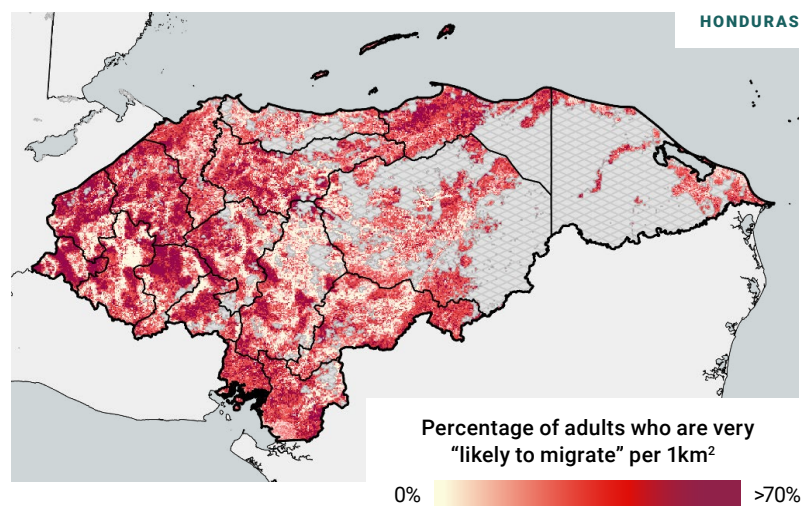
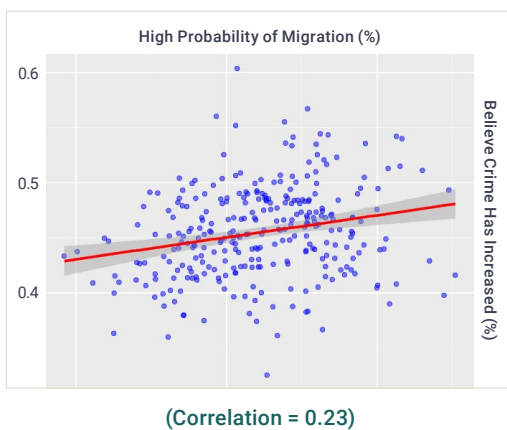
## Analytical Example

How are perceptions of crime driving migration in Honduras?

- » Perception of rising crime is positively correlated with intent to migrate.
- » Rising fears of crime ring Honduras' borders, with lower fear closer to the capital.

As we seek to address irregular migration in places like Honduras, neighborhood-level data on governance-related indicators and perceptions of crime, corruption, and government effectiveness are critical to informing tailored programming for increasing rootedness.

### CORRELATION ANALYSIS Honduran Municipalities

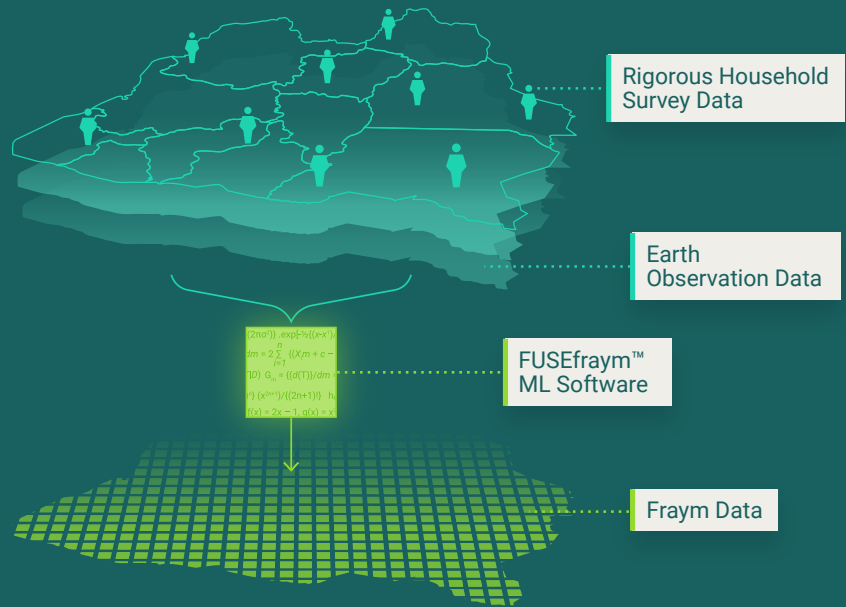


Source: Fraym, CID Gallup 2021/2022, Harvard T.H. Chan School of Public Health, ESRI

# Transforming ordinary household surveys into census-like spatial data.

## FRAYM'S UNIQUE VALUE

- » Neighborhood level resolution
- » Standardized global data
- » Trend monitoring
- » Flexible integrations



### Ukur Yatani Kanacho

**Current Position:** Treasury Secretary (2020 – present)

**Previous Positions / Roles:**

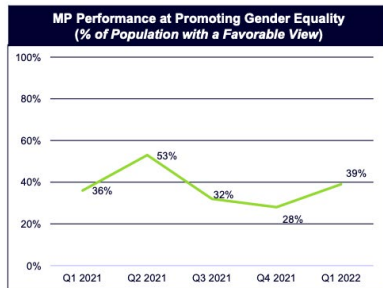
- Labour and Social Protection Cabinet Secretary (2019-2020)
- Governor, Marsabit County (2013-2017)
- Ambassador to Austria (2009-2012)
- MP, North Horr Constituency / Marsabit County (2006-2009)

**Born:** Forole, North Horr Sub-County, Marsabit County

**Social Media:**

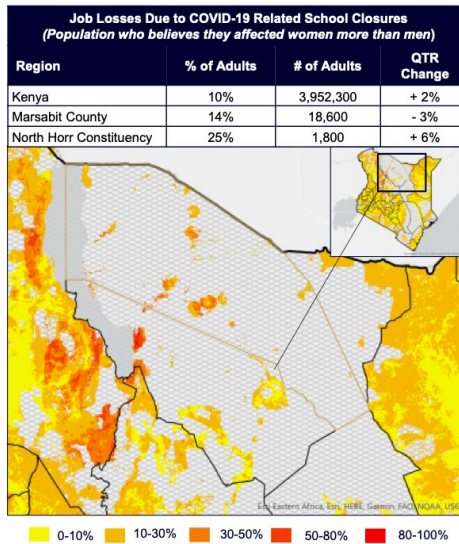
- Twitter – @ukuryatani
- Facebook – <https://www.facebook.com/ukurkanacho>
- Instagram – amb.ukuryatani

**Educated:** North Horr Primary School, Garbatulla High School, Kabarnet High School, Egerton University



#### Top Media

	Kenya	Marsabit	North Horr
Citizen TV	70%	62%	57%
WhatsApp	56%	48%	48%
Facebook	50%	51%	49%
KTN TV	47%	44%	40%
K24 TV	33%	31%	28%
KBC TV	26%	26%	36%
Daily Nation	23%	29%	38%
Twitter	17%	21%	35%



## Public Support for Inclusive Recovery Policies

Fraym produced first-of-its-kind polling data on public support for inclusive economic recovery policies in Kenya. These dashboards are updated monthly or quarterly for any constituency—providing a new level of insight to influence democratic progress.

CURRENT CUSTOMERS



Contact Anna Loughran at [a.loughran@fraym.io](mailto:a.loughran@fraym.io) to discuss further