

Zoom into communities across the globe and know the people's attributes, attitudes, and behaviors.

## Key Applications for Monitoring, Evaluation, & Learning

### Geospatial Impact Evaluation

Fraym's GIE approach develops scientifically robust, testable, and quantified spatial understanding of impact at the community level.

### Community-Level Learning

Custom, intuitive dashboards to visualize and share learnings across stakeholders regardless of analytical expertise.

### Visualize and Communicate Insight

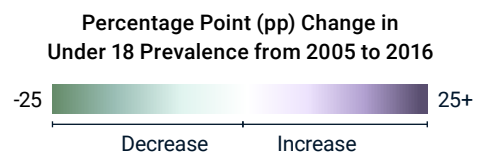
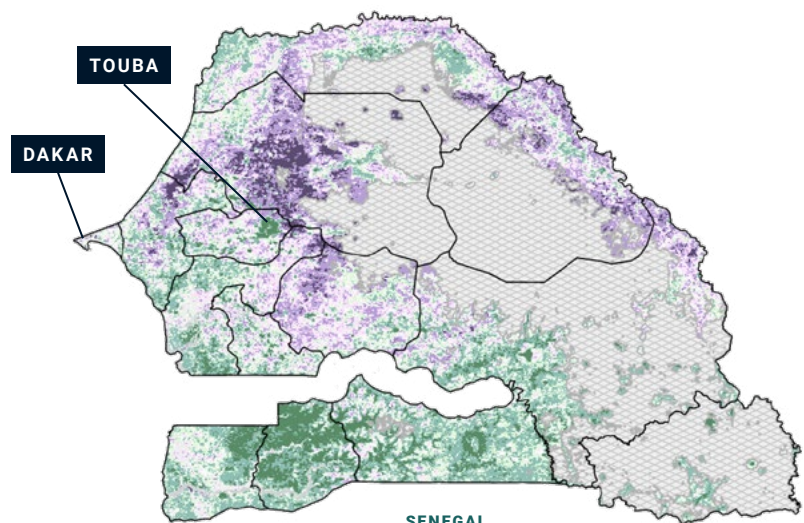
Represent change over time with powerful heatmaps of key indicators and unmask neighborhood-level correlations.

## Analytical Example

### Where has under-18 child marriage increased despite national level progress?

- » Child marriage decreased from 2005 to 2016 4.2% nationally
- » In Linguere department, child marriage increased 13% in that same time frame

Put differently, the national lens looked like almost nothing was happening. But, the sub-national lens showed that prevalence was declining in many communities (sometimes dramatically so) while simultaneously increasing in other areas.

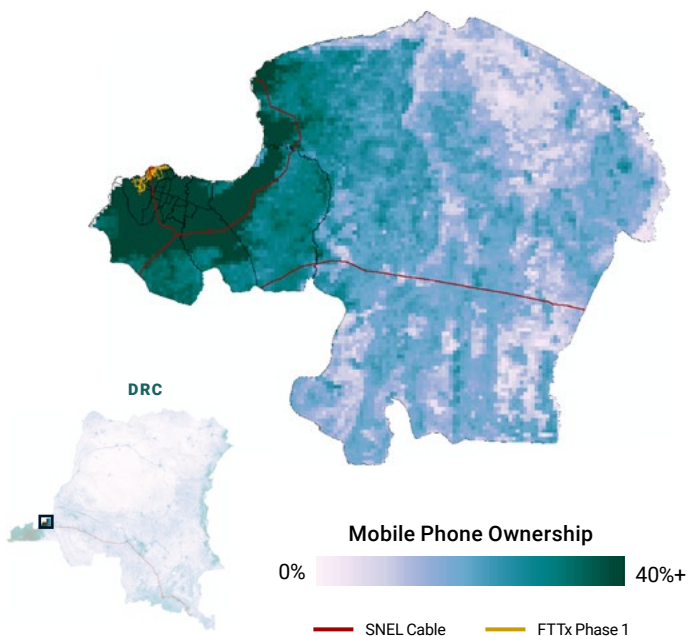
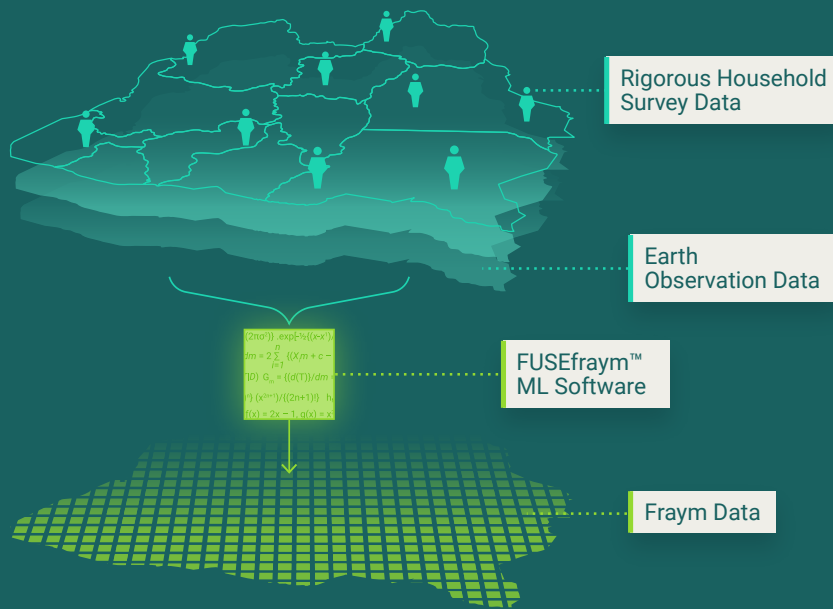


■ Areas with total population less than 10 people per sq km

# Transforming ordinary household surveys into census-like spatial data.

## FRAYM'S UNIQUE VALUE

- » Neighborhood level resolution
- » Standardized global data
- » Trend monitoring
- » Flexible integrations



## Quantifying Infrastructure Impact

For UK's CDC Group, Fraym conducted a comprehensive baseline assessment using our database of hyperlocal household level socio-economic indicators of households and business data surrounding a planned internet infrastructure investment from Kinshasa to Lubumbashi in the DRC.

Households with access to some form of internet	90%
Working-age population owning a smartphone	81%
Businesses without any internet connection	70%
Businesses using internet for hiring purposes	19%
Internet access of small businesses	39%

CURRENT CUSTOMERS



BILL & MELINDA GATES foundation



Contact Catherine Winn at [c.winn@fraym.io](mailto:c.winn@fraym.io) to discuss further