

Zoom into communities across the globe and know the people's attributes, attitudes, and behaviors.

Key Applications for Agriculture

Localized Data on Farmers

Rapidly understand contexts and target interventions to areas most in need, even in remote, data-scarce environments.

Sustainability

Reveal, highlight, and track the intersection of communities and the natural resources that support them, from forests and cooking fuel, water and irrigation, to soil and farming.

Food Insecurity

Transform high-level understanding of food insecurity into gender- and age-disaggregated heatmaps that highlight communities more in need. to climate change over time to inform adaptive management.

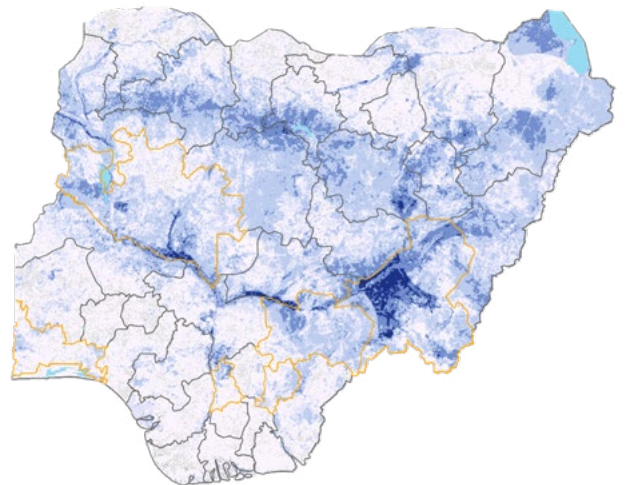
Analytical Example

How have smallholder farming programming impacted communities in Nigeria?

- » Generator ownership increased 2.7x the rate of smallholders nationally
- » Almost twice as less than the national average relied on a river for their source of water

Only halfway through an agriculture program, participants had significantly better changes in asset ownership and sanitation than similar communities over the same time period.

| | LGA Smallholders | Smallholders Nationally | Participants |
|------------------------|------------------|-------------------------|--------------|
| Advanced Roof | 2% | 17% | 29% |
| Generator Ownership | -16% | 9% | 25% |
| Refrigerator Ownership | -35% | 6% | 80% |
| Water Source: River | 34% | -15% | -26% |



Percentage of smallholder rice households

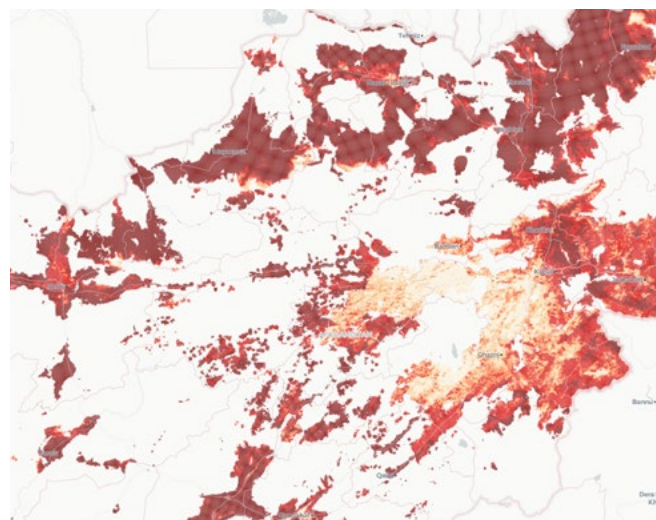
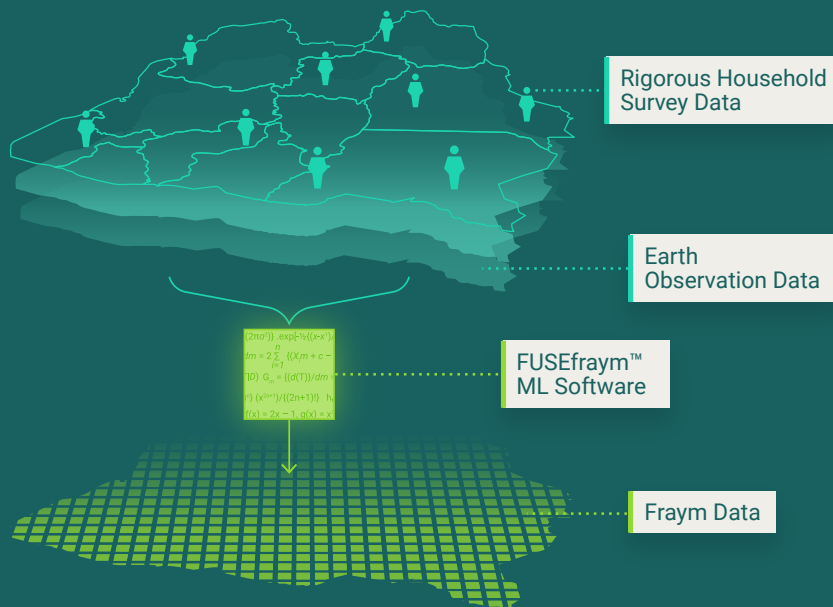
5% >50%

Zero or No Data Program States Water bodies

Transforming ordinary household surveys into census-like spatial data.

FRAYM'S UNIQUE VALUE

- » Neighborhood level resolution
- » Standardized global data
- » Trend monitoring
- » Flexible integrations



Localized Portrait of Food Insecurity

Fraym's snapshot of food insecurity on the eve of the US evacuation from Afghanistan highlights stark spatial differences in ability to afford food that can be leveraged to allocate humanitarian resources and long-term investments to bolster food security.

| District | Able to Afford Food |
|---------------|---------------------|
| Chakhansur | 24% |
| Chahar Burjak | 25% |
| Washer | 27% |
| Khash Rod | 29% |
| Nad Ali | 29% |

Able to Afford Food (%)



CURRENT CUSTOMERS



Contact Catherine Winn at c.winn@fraym.io to discuss further