

Mapping Humanity

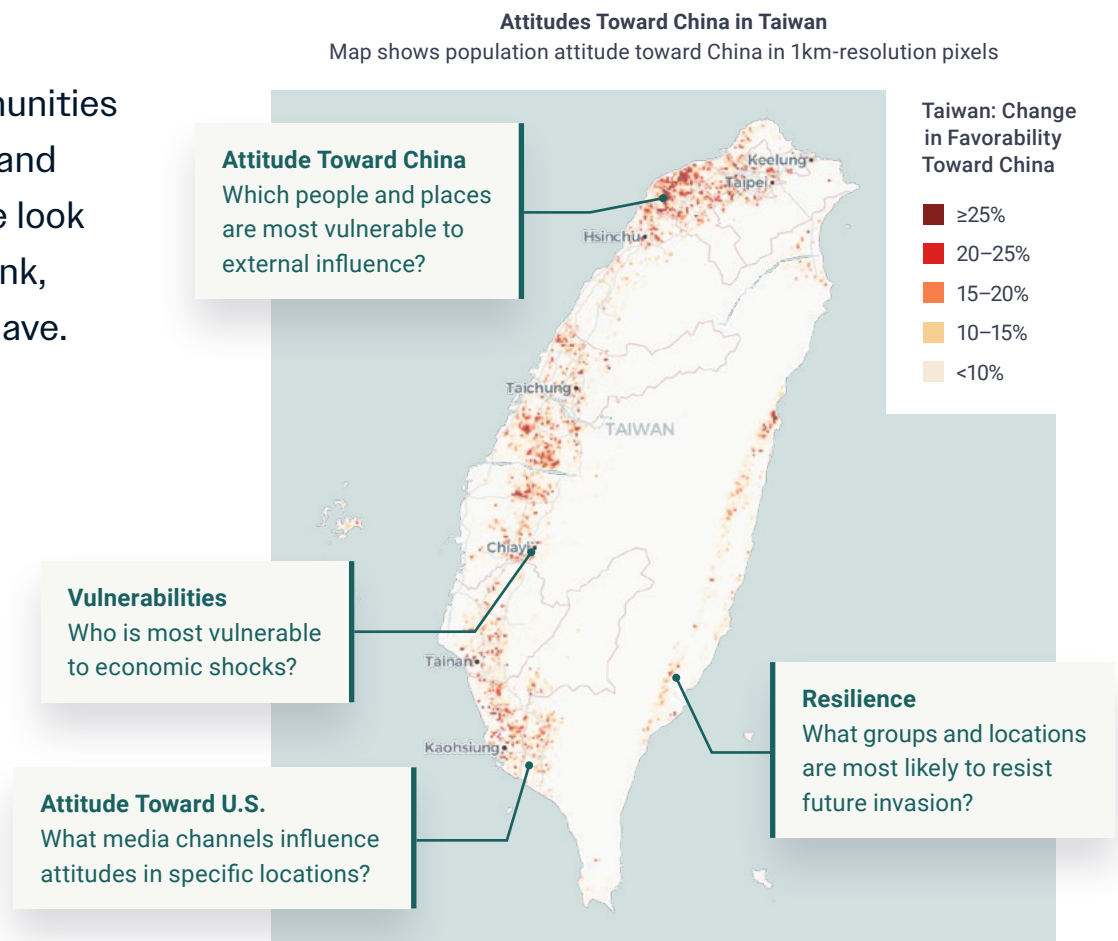


Fraym is novel, localized human geography data for the entire world. We use advanced ML to combine survey data and satellite imagery. The result is localized information on population attitudes, attributes and behaviors.

GEOINT Applications for Fraym

- » Attitudes Toward US and Adversaries
- » Indications and Warnings
- » Warfighter Support
- » Impact on Climate Change
- » Assessing Vulnerabilities
- » Tracking Socioeconomic Changes

Zoom in on communities across the globe and know what people look like, what they think, and how they behave.



Delivery Mechanisms



Data as a Service

Bring Fraym's foundational data into your environment.



Analytics as a Service

Custom reports and analysis to answer mission critical questions.



dataFraym Interface

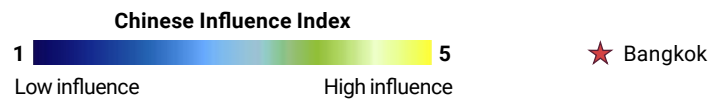
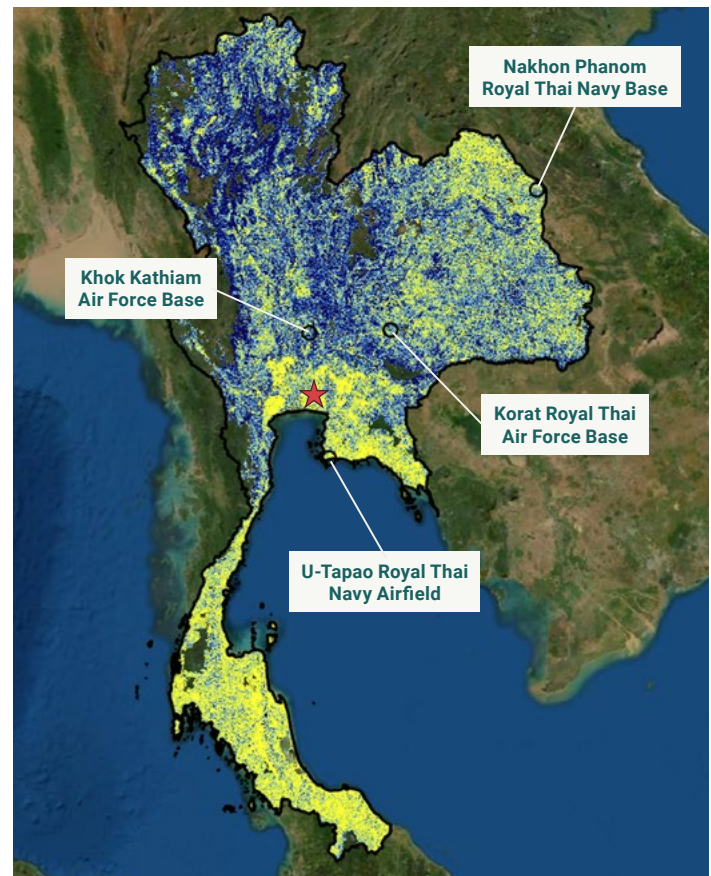
Use Fraym's GUI to access data and generate insights.

Layered Human Geo Analysis

Combining multiple Fraym data layers to assess local vulnerability to influence.

Index Component	% Adults
Favorable toward China	69%
Favorable toward closer diplomatic ties to China	53%
Favorable toward Chinese access to Thai bases and ports	23%
Favorable toward China's growing military power	30%
Have family member living in China	6%
Have business relations in China	17%
Receive remittances from China	7%
Enjoy Chinese entertainment	37%
Chinese Influence Index	3.5

How vulnerable to Chinese influence are the populations around key Thai air bases?



CURRENT CUSTOMERS



Contact Rob Galvin at r.galvin@fraym.io to discuss further